

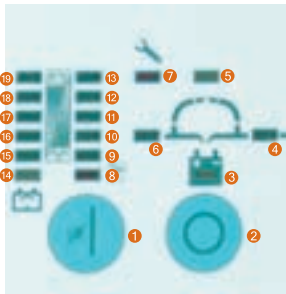
M.series

Double conversion on-line technology

- Double conversion on-line technology
- Single-phase input and output
- Sinusoidal output voltage
- High efficiency
- Microprocessor management
- Standard automatic by-pass
- Self-Diagnostics
- Battery level indicator
- Charge level indicator
- Telephone line protection and RJ11 plug modem
- Increase of autonomy with battery box
- RS232 communication interface
- Control and management software included
- Compact size
- Also available in the Rack version ●

Optional:

- SNMP converter and software ●

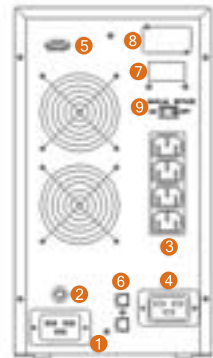
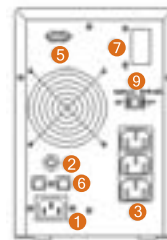


SYNOPTIC AND CONTROLS

- 1.ON/TEST/ALARM button
- 2.OFF button
- 3.BAT led (yellow)
- 4.INV led (green)
- 5.BYPASS led (yellow)
- 6.LINE led (green)
- 7.FAULT led (red)
- 8.OVERLOAD led (red)
- 9.100% LOAD led (green)
- 10.80% LOAD led (green)
- 11.60% LOAD led (green)
- 12.40% LOAD led (green)
- 13.20% LOAD led (green)
- 14.LOW BAT led (yellow)
- 15.20% BAT led (green)
- 16.40% BAT led (green)
- 17.60% BAT led (green)
- 18.80% BAT led (green)
- 19.100% BAT led (green)



- 1.ON button
- LED: line - ups
- 2.OFF button
- LED: by-pass - fault
- 3.SELECT button
- LED: battery low - overload



M 1000-2000-3000

M 4000-6000

- 1.Input socket with ground connection
- 2.Network input fuse (M 1000 only)
- 3.Thermal circuit breaker
- 4.Output outlet with ground connection
- 5.Power output outlet with ground connection
- 6.Computer interface (RS-232)
- 7.RJ11/RJ45 IN/OUT connector
- 8.Connector slot for external batteries connection
- 9.SNMP adapter slot (M 2000 and M 3000 series only)
- 10.Manual BYPASS switch



GENERAL

Model	M 1000	M 2000	M 3000	M 4000	M 6000
Power (VA)	1000	2000	3000	4000	6000
Power (W)	700	1400	2100	3200	4800
Technology	ON-LINE DOUBLE CONVERSION				

INPUT

Rated voltage (Vac)	Single-phase 220/230 V
Input voltage tolerance	+ 20% / 25%
Input/output frequency	50/60 Hz (automatic selection)
Input frequency tolerance	+/- 5%

OUTPUT

Output rated voltage	Single-phase 220 / 230 V	
Output voltage stabilization (Line Mode)	+/- 2%	+/- 1%
Output voltage stabilization (Battery Mode)	+/- 2%	+/- 1%
Inverter output wave form	Sinusoidal	
THD	< 3%	
Transfer time (typical)	0 ms	
Automatic by-pass	Uninterrupted passage (100% load) da UPS to by-pass and vice versa	

BATTERIES

Type	Sealing lead without maintenance				
Rated voltage	36 Vcc	96 Vcc	192 Vcc		
Recharge time (typical)	8 hours				
Position	Internal				
Typical autonomy	15 min	20 min	15 min	12 min	10 min
Autonomy extension	Available with external battery box (optional)				
Noise at 1 m	< 50 dBA			< 50 dBA	
Cooling	Fan forced				
Operational environment conditions	Temperature: 0-40 C - Humidity: 0-95% (without condensate) - Height: max 3000 m				

PROTECTION

Protection suggested	1 LAN SERVER + 2 CLIENT	1 LAN SERVER + 7 CLIENT	1 LAN SERVER + 10 CLIENT	-
Overload accepted	< 150% for 30 sec; > 150% for 10 cycles			< 150% for 20 sec; > 150% for 10 cycles
Telephone line/modem	Standard RJ11/RJ45 plug			-

STANDARDS

Certifications	EC (Reference: Safety CEI EN 62040-1-1)
Electromagnetic compatibility	CEI 62040-2 / EN 50091-2) 20

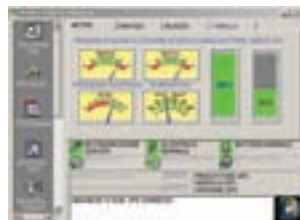
INTERFACE

LCD Display	Standard
Computer interface	1 RS232 port included
Communication software	UPSilon 2000 software and serial cable included
SNMP interface	Optional

GENERAL NOTES

Input/output clamps	Back on the bottom				
Standard	Input cable, 2 output cables, UPSilon 2000 software and serial cable				
Size (WxDxH mm)	15x21x41	19x34x47	19x34x47	23x70x58	23x70x58
Battery size (WxDxH)	-	-	-	27x73x63	27x73x63
Weight (kg)	13	33	34	105	109
Available colours	Black				
Warranty	2 years				

Also available in Rack version



UPSilon 2000 software

Software for the management of automatic shut-down of the Operative System on non-protected LAN Server in case of long blackouts.

It allows to turn on and off the computer at scheduled times.

Compatible with: any Windows Operative System, Novell, FreeBSD, Linux.

The installation CD and the computer connection cable are included in the package.